

ProcessPlugins Kiviat Display



Partner Organizations:

 Process
Innovations
Inc.

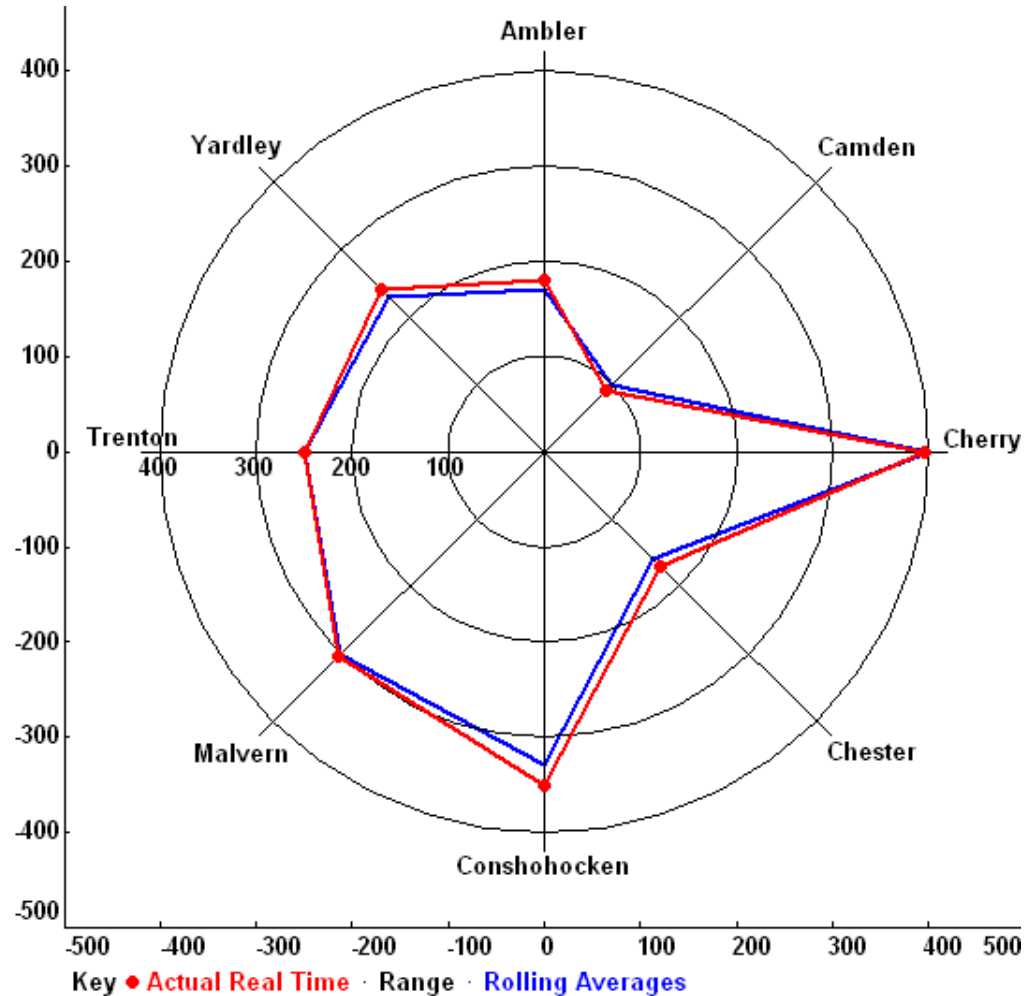
 **OSI**soft®

PROCESS PLUGINS™ KIVIAT DISPLAY

The Process Plugins Kiviati Display feature mathematically converts PI data so that a polar plot may be easily displayed within a Process Book using the XY (Cartesian) plotting object. The Process Plugins toolset continually scans for certain PI tags which are used to customize each individual display, as described below. The Process Plugins Kiviati Display feature supports an unlimited number of displays. Each display may have any number of live inputs which become evenly spaced and rendered real-time around the display circle.

FIELD INPUTS:

Ambler:	180.0
Camden:	90.0
Cherry Hill:	360.0
Chester:	170.0
Conshohocken:	350.0
Malvern:	305.0
Trenton:	250.0
Yardley:	240.0



PROCESS PLUGINS™ KIVIAT PI-TAG CONVENTION:

PPI.KIVIAT.NUMDISPLAYS – The value of this tag must equal the total number of Kiviata displays.

All other tag names end with the number identifying the display. # is used below for display number. Note that the display number never begins with “0”, but only uses the necessary number of digits.

PPI.KIVIAT.NUMINPUTS.# - The number of live inputs displayed around the circle.

PPI.KIVIAT.RADIUS1.# - The value of the radius of the first background circle

PPI.KIVIAT.RADIUS2.# - The value of the radius of the first background circle

PPI.KIVIAT.RADIUS3.# - The value of the radius of the first background circle

PPI.KIVIAT.RADIUS4.# - The value of the radius of the first background circle

PPI.KIVIAT.RADIUS5.# - The value of the radius of the first background circle

NOTE: All 5 of the Radius tags above must exist, but may be disabled with a value of 0.

PPI.KIVIAT.INPUTA1.# - The PRIMARY (red line on display) live input for value 1

PPI.KIVIAT.INPUTC1.# - The SECONDARY (blue line on display) live input for value 1

PPI.KIVIAT.INPUTA2.# - The PRIMARY (red line on display) live input for value 2

PPI.KIVIAT.INPUTC2.# - The SECONDARY (blue line on display) live input for value 2

Etc.

PPI.KIVIAT.INPUT1POS.# - The position on the circle (0-359) of Input 1

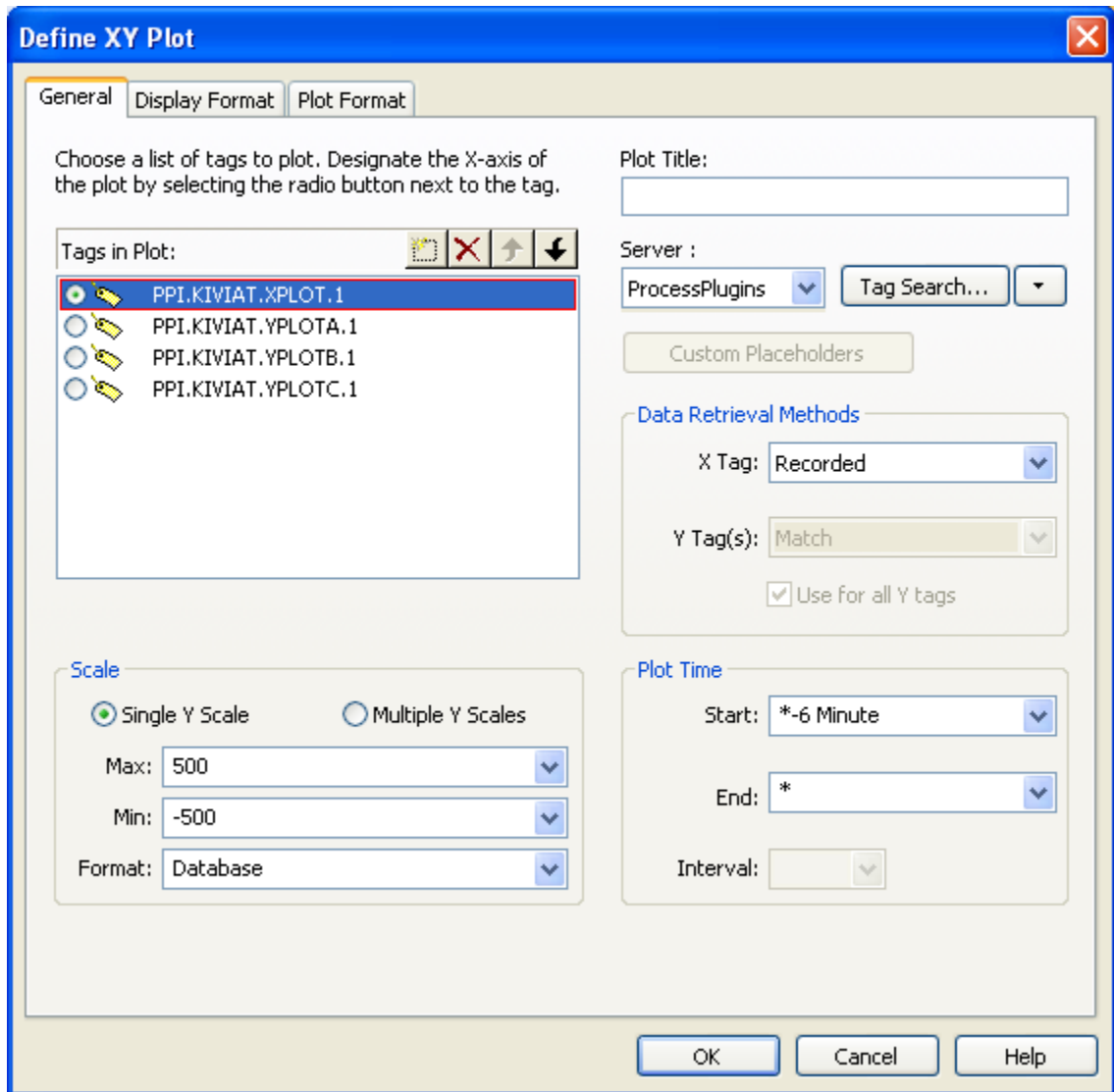
DEDICATED PLOT TAGS (values are written by code to these tags):

PPI.KIVIAT.XPLOT.# - X-axis plot tag

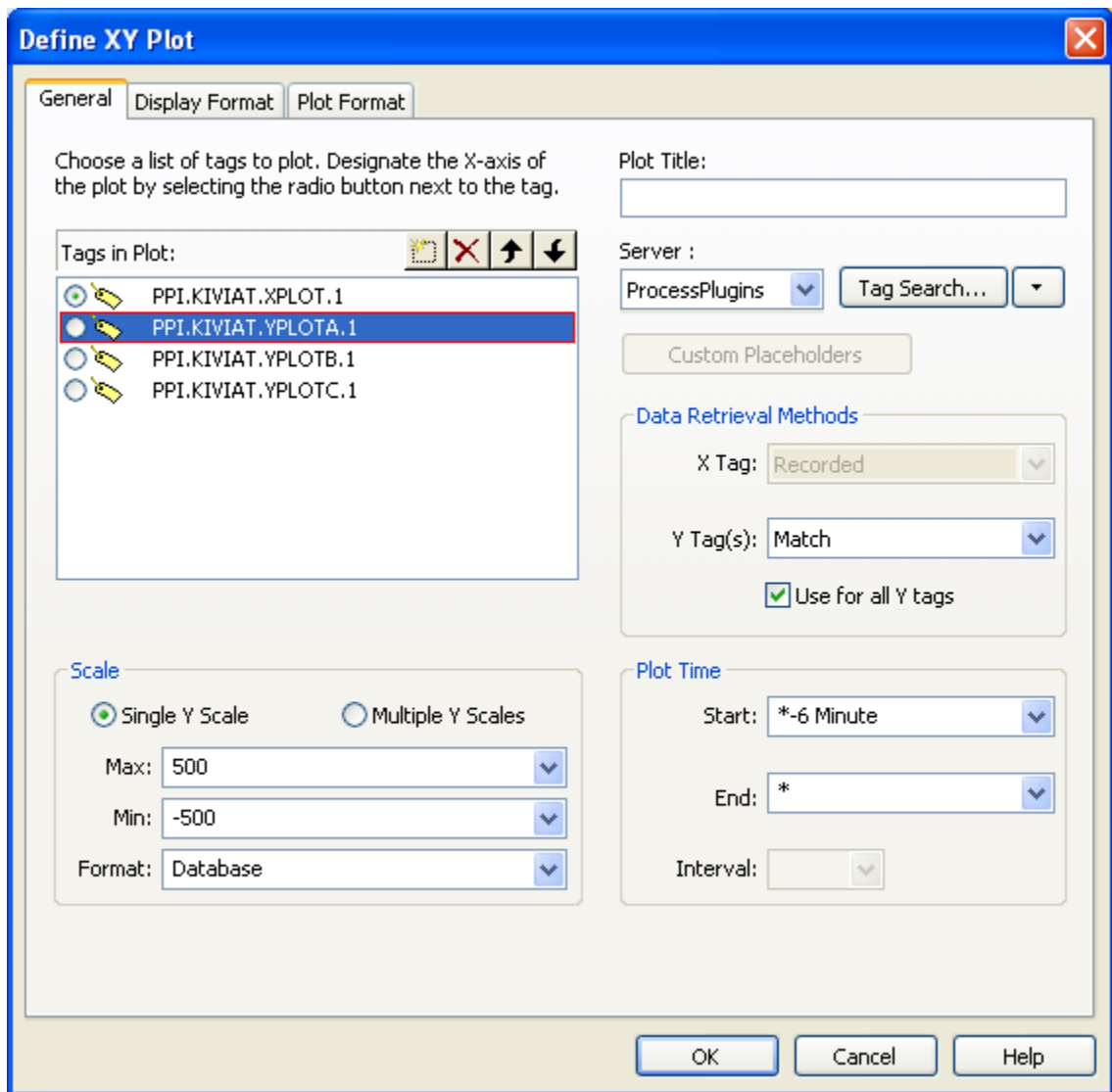
PPI.KIVIAT.YPLOTA.# - Y-axis plot tag for PRIMARY live inputs

PPI.KIVIAT.YPLOTB.# - Y-axis plot tag for background grid lines

PPI.KIVIAT.YPLOTTC.# - Y-axis plot tag for SECONDARY live inputs (ie. Rolling Averages)



In Process Book, Data Retrieval Method for X Tag must be set to “Recorded”. The Plot Time should be set to the minimum time which will not cause the display to go black between updates. This may vary depending upon the size of the PI system, and the speed of the hardware. If the plot periodically goes blank, the Plot Time should be increased in 1 Minute increments.



Note that Data Retrieval Methods for Y Tags should be set to "Match", and "Use for all Y tags" should be checked.



Contact us:

Process Plugins Inc.
2519 S. Shields St. #166
Fort Collins, Colorado 80526

1-970-266-8551

www.ProcessPlugins.com
Info@ProcessPlugins.com

Partner Organizations:

Process
Innovations
Inc.



OSIsoft®